

# Regiony na Horyzoncie

## Nauki o życiu w Horyzoncie Europa





# Projekt NEPHEWS i oferta badawcza synchrotronu SOLARIS

Piotr Piwowarczyk - Koordynator Biura ds. Projektów Międzynarodowych





nephews

coordinated  
by SOLARIS

## SOLARIS







nephews

coordinated  
by SOLARIS




# SOLARIS research infrastructure

Available and in user operation
Starting up, available for fall call
Project accepted, in construction, available in 2026
Project application submitted (decision in July 2024)
Available space for 4-5 beamlines

+

CryoEm centre



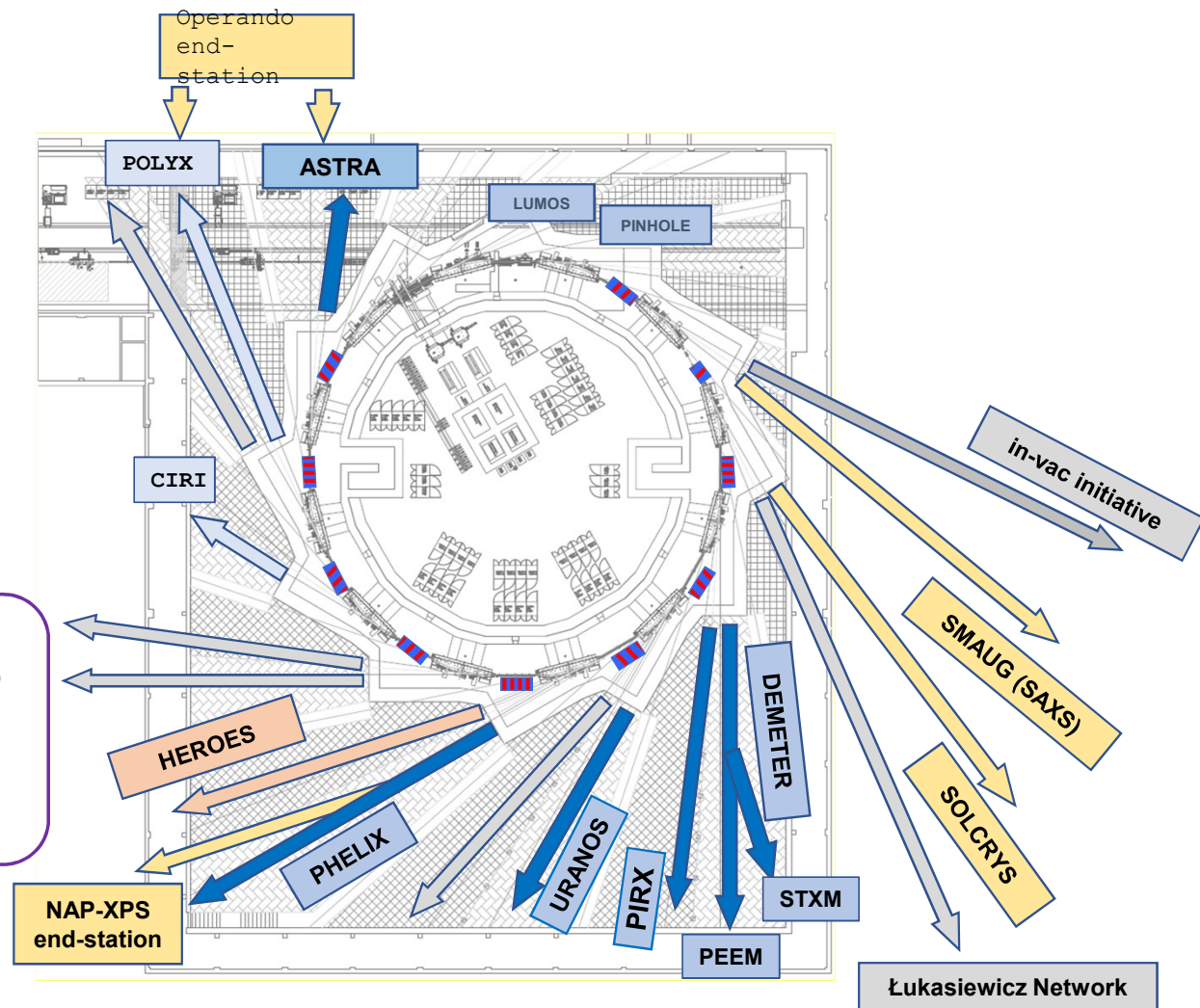
STRUCtURAL BIOLOGY CORE FACILITY

Krios  
Glacios

Neutron-lab (in construction)



RESEARCH UNIVERSITY  
EXCELLENCE INITIATIVE





nephews

coordinated  
by SOLARIS

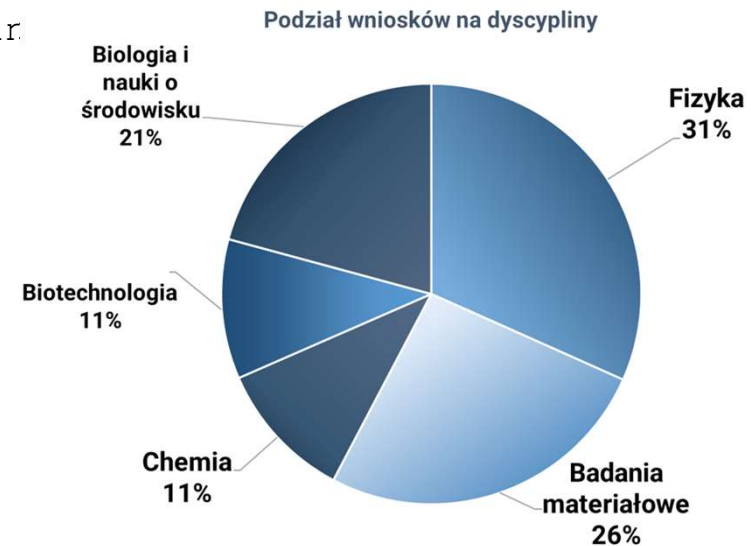
- **Obszary badawcze w SOLARIS**

- Obszary badawcze:

- ✓ testowanie i badanie materiałów w obszarze odnawialnych źródeł i magazynowania energii
- ✓ badania materiałowe istotne dla nowych technologii cyfrowych i przechowywania danych
- ✓ badania na poziomie molekularnym i strukturalnym, które są kluczowe dla nowych leków, metod diagnostycznych i chorób cywilizacyjnych
- ✓ wykorzystanie metod uczenia maszynowego



- Rozwój metod/technik eksperymentalnych badawczych/infrastruktury







**nepheWS**

coordinated  
by SOLARIS

# NEPHEWS -Neutrons and Photons Elevating Worldwide Science

HORIZON-INFRA-2023-SERV-01-03 - Research infrastructure services advancing frontier knowledge: co-fund pilots with pan-European RIs and/or national RIs

EU Funding: HORIZON COFUND: 4,7M €

Funding rate: 70%

Project budget: 6,8M €, SOLARIS: 840K €

Timeframe: 01/2024 – 12/2026

Consortium: 23 Partners (21 infrastructures)



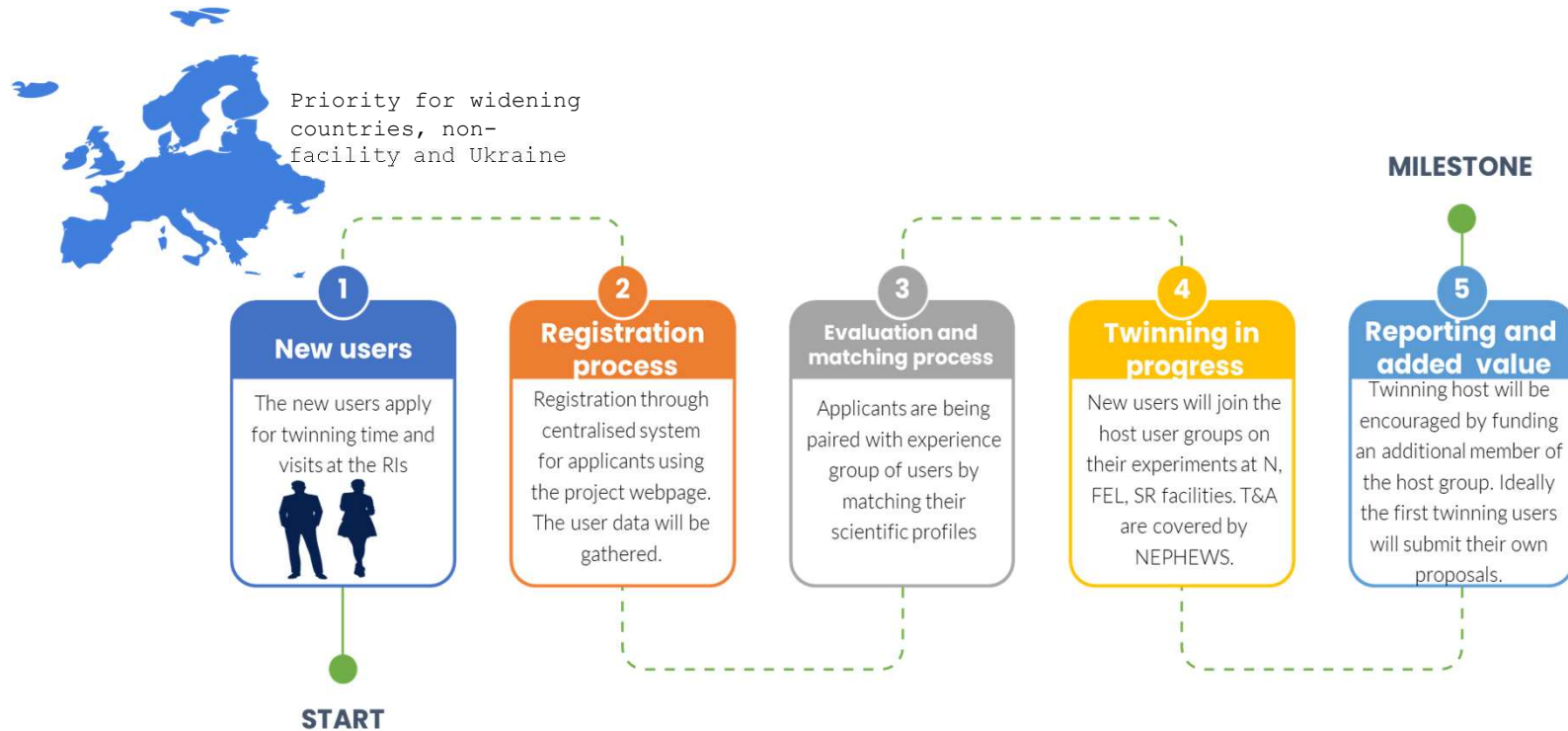


**nepheWS**

coordinated  
by SOLARIS

## WP2 - Community building, users' training and twinning, outreach to Widening countries and Africa. Scheme of main activities

User-twinning programme - experienced user groups volunteer to host "novice (*guest*) users" during their experiments, while similar scientific interests guarantee that the new users can gain "tailor-made" first-hand experience.





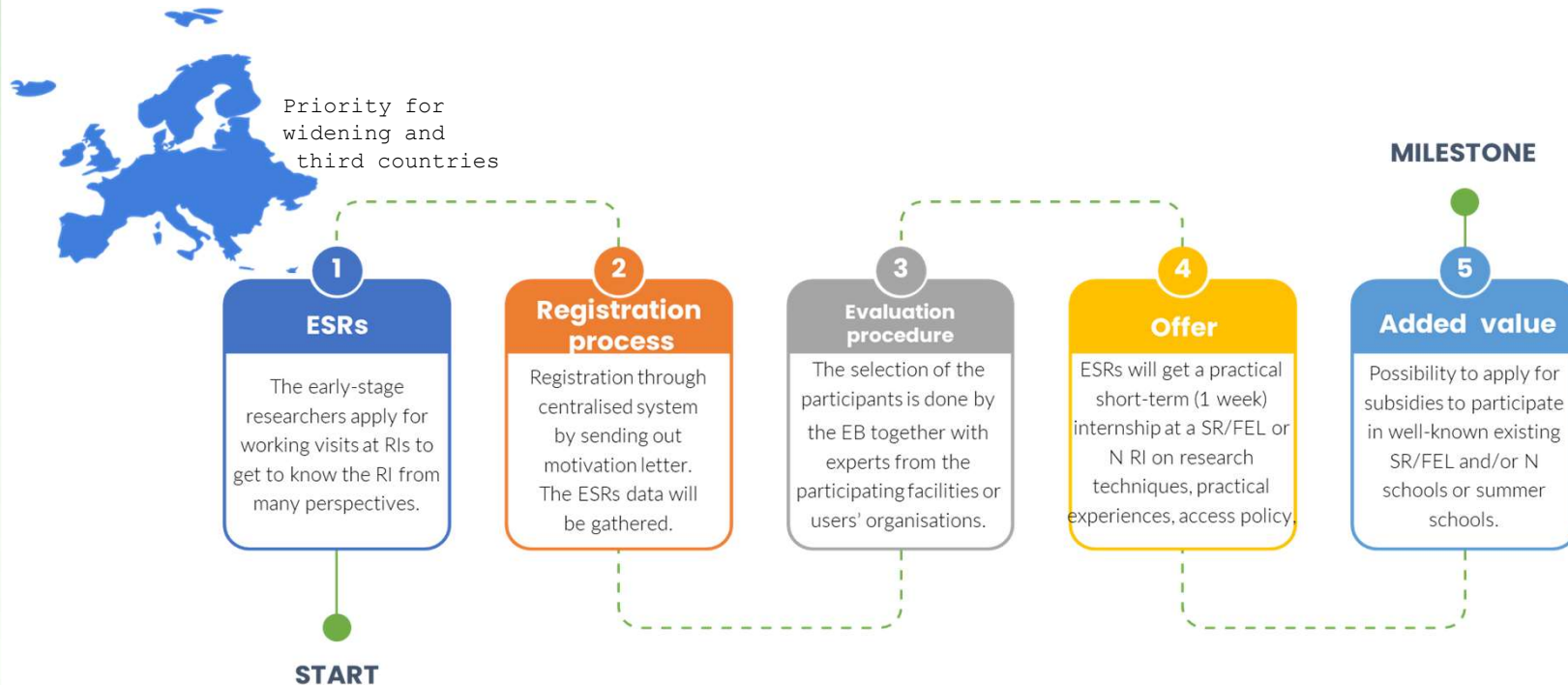


nephews

coordinated  
by SOLARIS

## WP2 - Community building, users' training and twinning, outreach to Widening countries and Africa. Scheme of main activities

ESRs specific support - 1 week internship at a SR/FEL or N RI gathering knowledge of different research techniques and on their applicability to different research fields, getting first practical experiences and gaining a better understanding of access policy, offer and other aspects of the facilities' activities, such as technology transfer or innovation stimulation through individualized programme.





nepheWS

coordinated  
by SOLARIS

## WP2 - Community building, users' training and twinning, outreach to Widening countries and Africa. Scheme of main activities

Virtual trainings - are promoted and announced by NEPHEWS online dissemination tool and social media as well as through the national ESUO and ENSA contact points

01

### Number of trainings

Four virtual training events (leading by ESRF and ILL) are offered to newcomers in the usage of large-scale RI.

02

### Scope

Day 1 - Research capabilities of SR/FELs and N RI.  
Day 2 - development of a successful beamtime proposal

03

### Open access

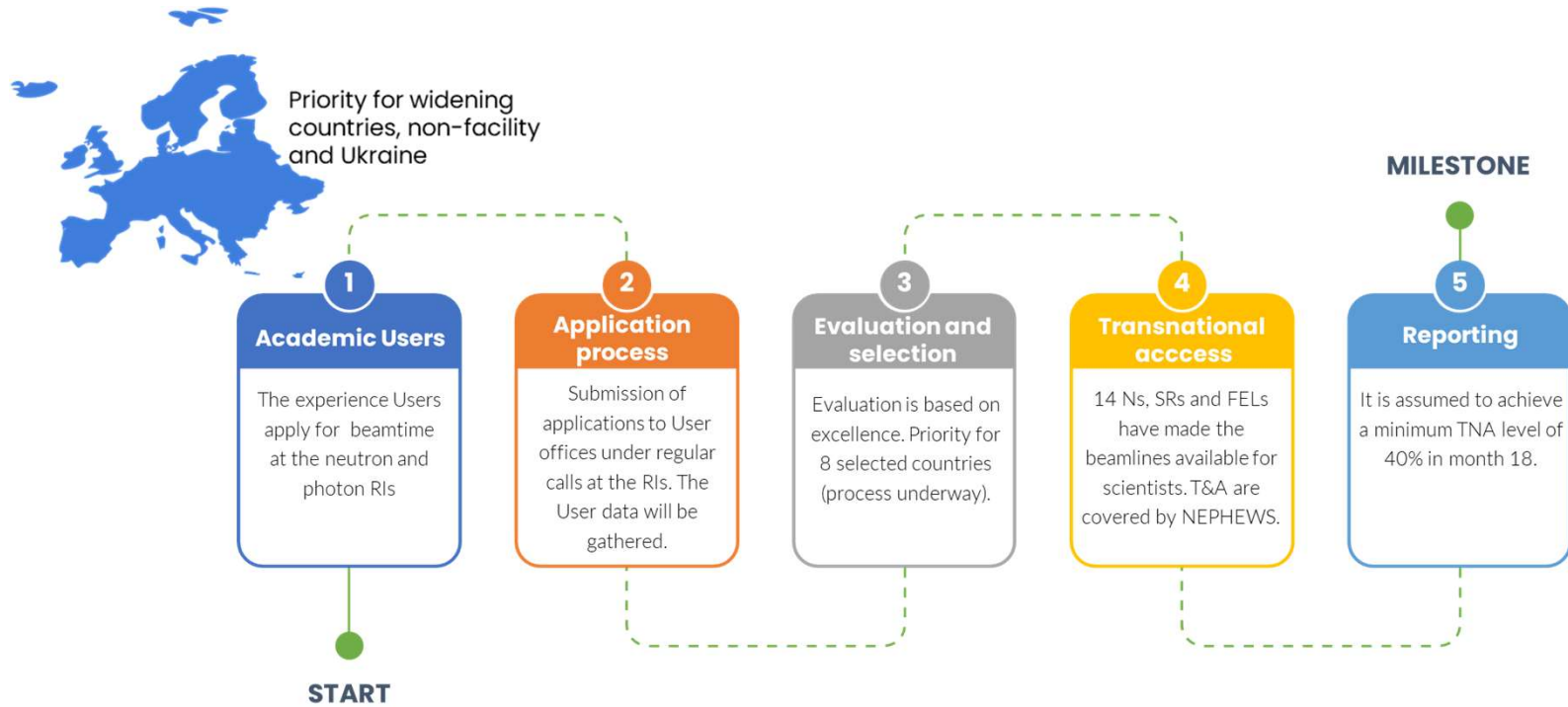
The NEPHEWS website will host the recordings of these training and provide the entry point to their training materials.



nephews

coordinated  
by SOLARIS

## WP4-17- TA/RA to NEPHEWS facilities

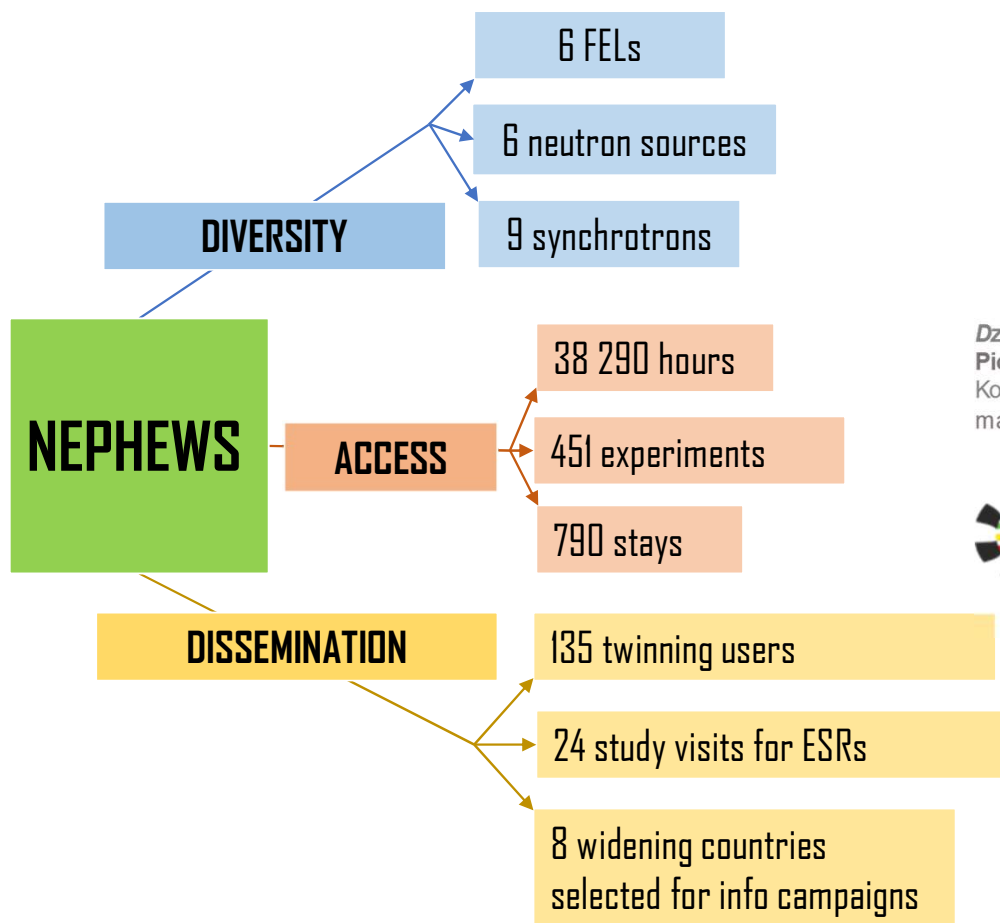






**nepheWS**

coordinated  
by SOLARIS



[www.beamtime.eu](http://www.beamtime.eu)

*Dziękuję za uwagę.*  
**Piotr Piowarczyk**  
Koordynator Biura ds. Projektów Międzynarodowych  
mail: [piotr.piowarczyk@uj.edu.pl](mailto:piotr.piowarczyk@uj.edu.pl) / tel.: +48 502595893



**SOLARIS**  
Narodowe Centrum Promieniowania Synchrotronowego  
Uniwersytet Jagielloński  
Czerwone Maki 98, 30-392 Kraków  
[www.synchrotron.pl](http://www.synchrotron.pl)