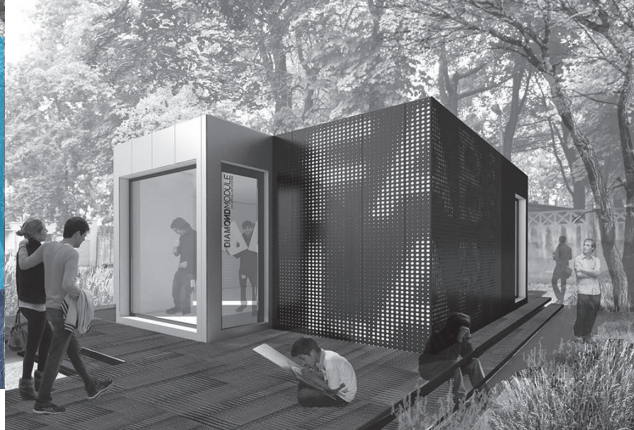




## Co-operation offer

**DIAMOND**MODULE  
UNIVERSAL UNIT SYSTEM®



Modular Building R&D Lab  
Faculty of Architecture  
Cracow University of Technology

## Modular Building R&D Lab

### The Modular Building Research & Development Laboratory (ModularLab) is:

- **the project 'umbrella'** that covers a wide range of interdisciplinary activities, including the design, research, prototyping, teaching, and training that refer to the topic of off-site construction, modular architecture, modular urbanism, and innovation in design processes;
- **the result of a collaboration between science and industry:** the Faculty of Architecture of the Cracow University of Technology (FACUT) and the company, BrilliantModule Ltd. (Diamond-Module);
- **the mobile modular office that the team designed and built;** it consists of students and employees from the FACUT, as well as experts from the company (it will soon be located on the historical grounds of the FACUT);
- **a creative space of innovative technological exchange** that promotes the collaboration of industry and academia.

### Objectives:

- To conduct research that will be implemented and utilized by industry partners
- To stimulate interdisciplinary dialogue between students, researchers, and industry stakeholders interested in modular and off-site construction

- To build and broaden awareness of the possibilities and benefits of using modular technology in architecture and urban design
- To encourage students and researchers to search for innovative applications

### Current Topics:

- modular social housing for refugees in Germany,
- socio-spatial innovations - modular kindergarten,
- senior-housing unit,
- relocatable modular building in the historical context of Cracow.

We are a highly experienced team of scientists and practitioners that actively collaborates with international experts representing business, industry, academia, and non-governmental organizations. If you are looking for contractors, project partners, or would like to join a research team, please contact us:

### Contact details:

**Ewelina Woźniak-Szpakiewicz**, Ph.D. M.Sc. Arch.  
e-mail: ewozniak-szpakiewicz@pk.edu.pl  
phone: +48 662 542 580  
ul. Podchorążych 1, 30-084 Kraków, Poland  
web: [www.modularlab.pk.edu.pl](http://www.modularlab.pk.edu.pl)



## Scientist + Entrepreneur = Success

If you are planning to develop your company on the basis of the latest scientific findings and you would like to collaborate with experienced scientific experts check the offer of Cracow University of Technology for the industry [www.s2b.transfer.edu.pl](http://www.s2b.transfer.edu.pl).

### Our online database includes:

- technology offers, patents and industrial designs
- listing of University commercial services including laboratory expertise and research
- database of experts with experience in the implementation of services for the industry

As an internal unit of Cracow University of Technology, our team of consultants is specialized in the commercialization processes. On the other hand long term active cooperation with entrepreneurs allows us to identify precisely industry needs and expectations. Experiences gained through the last two decades on the edge of industry and science collaboration, let TTC formulate optimal models of commercialization and suitable methods of development projects support.



Contact:  
Technology Transfer Centre  
Cracow University of Technology  
ul. Warszawska 24, 31-155 Kraków

Mrs Magdalena Wójtowicz  
tel. +48 12 628 28 45  
[s2b@transfer.edu.pl](mailto:s2b@transfer.edu.pl)  
[www.transfer.edu.pl](http://www.transfer.edu.pl)  
[www.facebook.com/CTTPK](https://www.facebook.com/CTTPK)



Ministerstwo Nauki  
i Szkolnictwa Wyższego



UNIA EUROPEJSKA  
EUROPEJSKI FUNDUSZ  
ROZWOJU REGIONALNEGO

